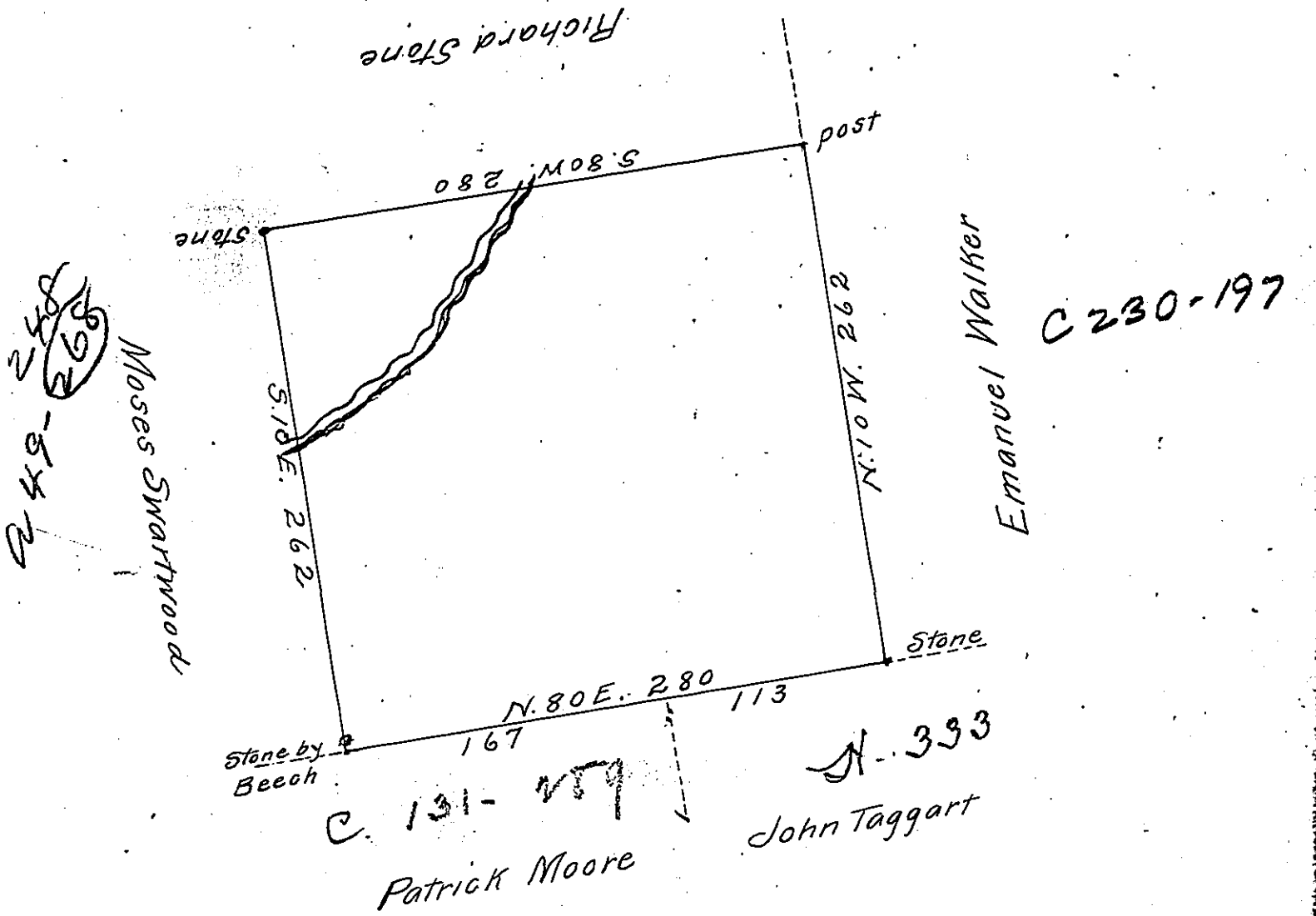


A-49-267



By Virtue of a Warrant dated the 25th February 1793 Surveyed the
 13th September 1793 to Polly Dupy the above described tract of Land
 Situate on Lehi in the Counties of Northampton & Luzern
 Containing four hundred and thirty two Acres Ninety Six perches
 and the Allowance of Six p Cent &c

J Geo Palmer D.S.
 Wm Gray D.S.

To Daniel Brodhead Esquire }
 Surveyor General }

IN TESTIMONY that the above is a copy of the original remaining on file in
 the Department of Internal Affairs of Pennsylvania, made
 conformably to an Act of Assembly approved the 16th day of
 February, 1833, I have hereunto set my Hand and caused
 the Seal of said Department to be affixed at Harrisburg,
 this Ninth day of February 1911

Nancy Horck
 Secretary of Internal Affairs.